

Project: \_\_\_\_\_  
 Model #: \_\_\_\_\_  
 Item #: \_\_\_\_\_ Qty: \_\_\_\_\_  
 Approval: \_\_\_\_\_

460 Southport Commerce Blvd.  
 Spartanburg SC 29306  
 Phone: 864-574-6004  
 Toll Free: 1-888-532-2816  
 sales@ojedausainc.com  
 service@ojedausainc.com  
 www.ojedausa.com



# GLASS DOOR MERCHANDISER

# RMH-10SL



## CARE FREE CONDENSER

The finless spiral condenser design prevents dust/dirt buildup allowing maximum long term efficiency.

## R-290 REFRIGERANT

Equipped with R-290 refrigerant, an eco-friendly alternative that meets the EPA's environmental impact regulations.

## STEEL CONSTRUCTION

Robust steel construction minimizes the use of plastic materials resulting in an environmentally friendly design.

## ELECTRONIC CONTROL

The intelligent temperature control is programmed to ensure the correct operation of the equipment.

## LED LIGHTING

LED provides long lasting energy efficient lighting with minimal heat output.

## HOT GAS EVAPORATION

Hot gas heated drain pan for condensate evaporation that reduces the need of floor drains or electric heaters.

## OPERATION TEMPERATURE

Medium Temp: 34°F to 40°F.

**Custom Graphics  
Available Upon Request**

| Dimensions |        |         | Shelves              | HP  | Voltage                           | NEMA Config | Amps | Crated Weight | Refrigerant |
|------------|--------|---------|----------------------|-----|-----------------------------------|-------------|------|---------------|-------------|
| W          | D      | H       |                      |     |                                   |             |      |               |             |
| 24"        | 19.4"  | 59.6"   | 3                    | 1/6 | 120                               | 5-15P       | 3.5  | 246 lbs       | R-290       |
| 610 mm     | 493 mm | 1514 mm | Net Capacity (cf): 7 |     | Energy Consumption: 1.36 kWh/24 h |             |      |               |             |

\*Inches rounded up one decimal place. \*Specifics may change without notification.



FAMILY OWNED SINCE 1948  
 PROUDLY MANUFACTURED  
 IN NORTH AMERICA

# GLASS DOOR MERCHANDISER

# RMH-10SL

## CABINET CONSTRUCTION

- High-density, CFC-Free, polyurethane insulation.
- Exterior: galvanized metal cabinet with black powder coated painted surface.
- Interior: White easy to clean pre-painted steel.

## DOOR

- One (1) double pane glass door assembly.
- Self closing door.
- Recessed pocket handle.
- Magnetic door gasket.

## SHELVING

- 3 adjustable, white powder-coated wired shelves.
- Dimensions per shelf: 19.7" W X 14.2" D.

## OPERATING CONDITIONS

- The unit is best suited for an environment where temperatures remain below 75°F and humidity does not exceed 55%.
- Areas with direct sunlight should be avoided.

## ELECTRICAL

- 110/120 standard volt system.



5-15P PLUG

## LIGHTING

- LED interior lighting mounted on the door.

## REFRIGERATION

- R-290 refrigerant.
- Maintenance free condenser.
- Hot gas heated condensation pan.
- Electronic temperature control.
- Automatic defrost cycle.
- Easy to reach components for maintenance.

## ACCESSORIES

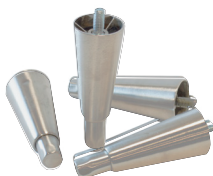
- 6" stainless steel legs.
- 3" or 5" casters.
- Bottle organizer.
- 13" or 24" Pizza tray.
- Custom Graphics.

## OPTIONAL ACCESSORIES

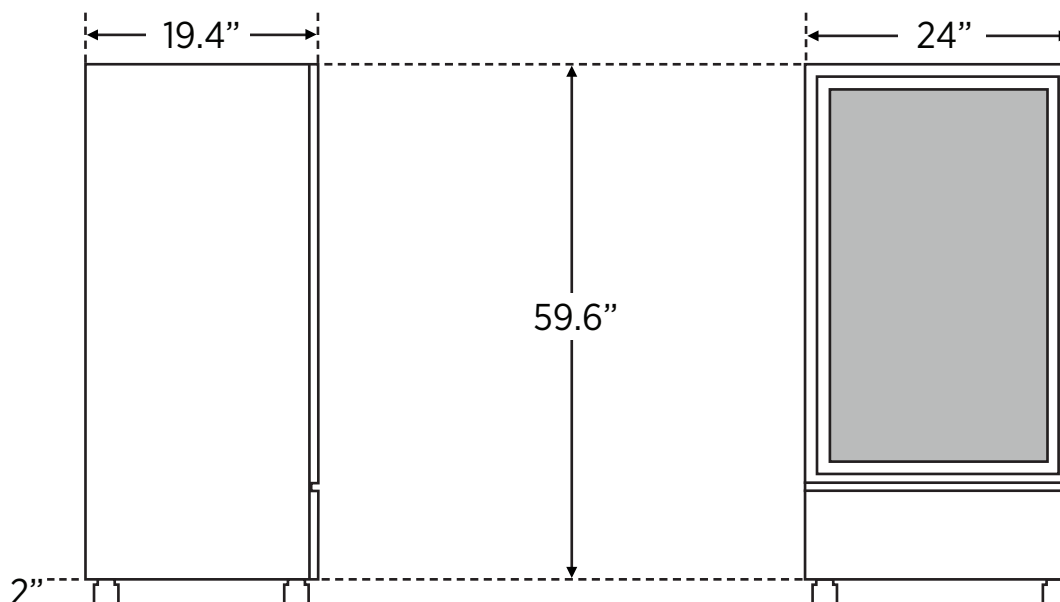
### 3"/5" CASTERS



### 6" ADJUSTABLE LEGS



## DIMENSIONAL DRAWING



\*INCHES ROUNDED UP ONE DECIMAL PLACE \*SPECIFICS MAY CHANGE WITHOUT NOTIFICATION



[www.ojedausa.com](http://www.ojedausa.com)