

KG-22-W

MEAT GRINDER

PRO-CUT[®]

SPEC SHEET

www.pro-cut.us

STANDARD FEATURES

- 1,700+ lbs /hour processing capacity
(1st grinding – 3/8" plate)
- 800+ lbs /hour processing capacity
(2nd grinding – 1/8" plate)
- 1 HP motor with powerful 28 lbs-ft torque for meat grinding
- Precision engineered steel gear transmission
- Food grade stainless steel body and large feed tray
- Robust headstock with permanent affixed safety guard
- Non slip rubber feet



PRODUCT HIGHLIGHTS



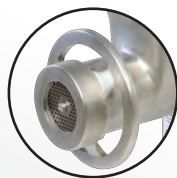
Affixed safety guard



Stainless steel body and tray



Included accessories



High grinding capacity



Non skid-feet



**30.2" x 16.1 x 3.3"
Feed tray**



1 year parts and labor

KG-22-W

MEAT GRINDER

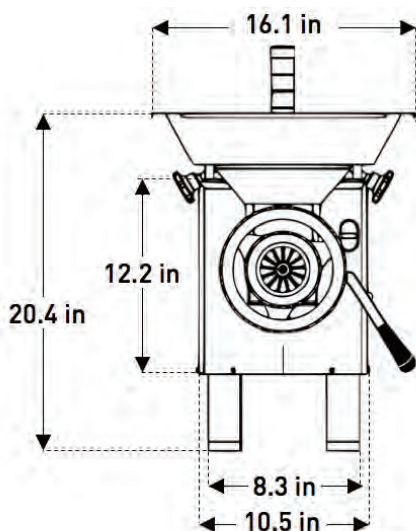
PRO-CUT®

SPEC SHEET

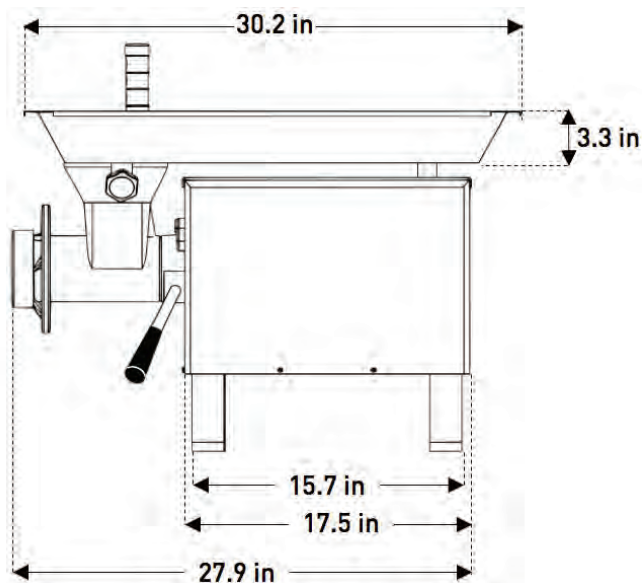
www.pro-cut.us

PLAN VIEW

Front view



Side view



NEMA 5-15P

TECHNICAL DATA

Dimensions

External dimensions	L: 30.2" W: 16.1" H: 20.4"
Net weight	133.38 lb (60.50 kg)
Power cord length	5.9 ft

Construction

Cabinet & Tray	Stainless steel
Headstock	Cast iron

Logistic data

Max number of SKU per pallet	4
Shipping dimensions per unit	L: 32" W: 16.5" H: 27.5"
Shipping weight per unit	166 lbs
Shipping dimensions full pallet	L: 37" W: 36" H: 59"
Shipping weight full pallet	705 lbs
Freight class	85

Electrical data

Motor	1 HP
Volts / Frequency	110 Vac / 60 Hz
Amps	15
Watts	750
Phase	1 PH
Type of plug (NEMA)	5-15P

Performance / Capacity

1st grinding capacity (3/8" plate)	29 lbs / min
2nd grinding capacity (1/8" plate)	14 lbs / min

Accessories

Knives	Plates
NIR-22 (Stainless Steel Rectangular)	CI-22-3/16"
NLV-22 (Long Lasting Steel)	CI-22-1/8"
	CI-22-3/8"
	CI-22-1/4"

L: Length W: Width H: Height