

KG-22-W-XP

MEAT GRINDER

PRO-CUT®

SPEC SHEET

www.pro-cut.us

STANDARD FEATURES

- 1,800+ lbs /hour processing capacity
(1st grinding – 3/8" plate)
- 900+ lbs /hour processing capacity
(2nd grinding – 1/8" plate)
- 2 HP motor with powerful 56 lbs-ft torque for meat grinding
- Precision engineered steel gear transmission
- Food grade stainless steel body and feed tray
- Robust headstock with permanent affixed safety guard
- Non slip rubber feet
- Includes motor protector



PRODUCT HIGHLIGHTS



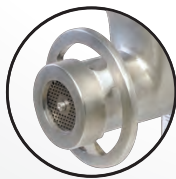
Affixed safety guard



Stainless steel body and tray



Included accessories



High grinding capacity



Motor protector



**30.2"x16.1"x3.3"
Feed tray**



1 year parts and labor

KG-22-W-XP

MEAT GRINDER

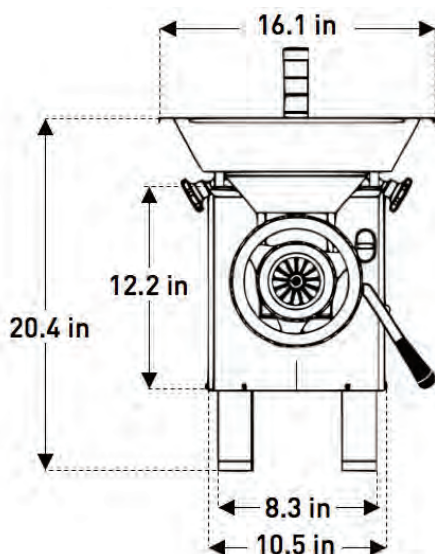
PRO-CUT®

SPEC SHEET

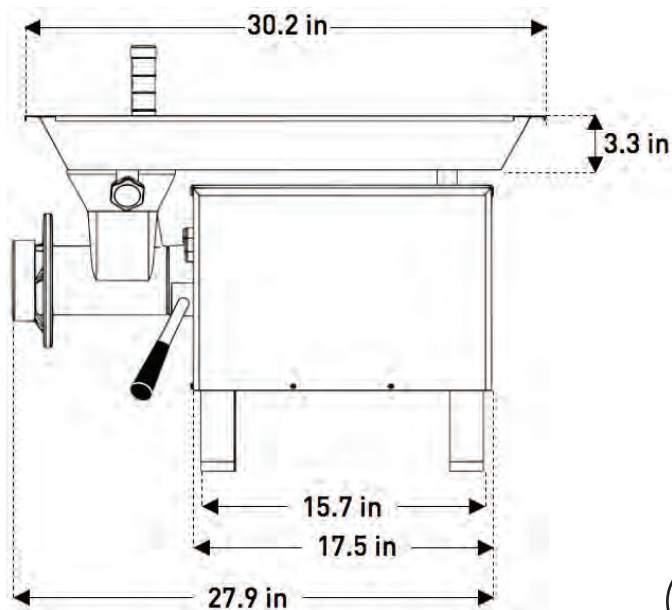
www.pro-cut.us

PLAN VIEW

Front view



Side view



NEMA 5-15P

TECHNICAL DATA

Dimensions

| | |
|---------------------|----------------------------|
| External dimensions | L: 30.2" W: 16.1" H: 20.4" |
| Net weight | 137.79 lb (62.50 kg) |
| Power cord length | 5.9 ft |
| | |
| | |
| | |

Construction

| | |
|------------------|-----------------|
| Cabinet material | Stainless steel |
| Tray material | Stainless steel |
| Headstock | Cast iron |
| | |
| | |
| | |

Logistic data

| | |
|---------------------------------|------------------------|
| Max number of SKU per pallet | 4 |
| Shipping dimensions per unit | L: 32" W: 16.5" H: 27" |
| Shipping weight per unit | 171 lbs |
| Shipping dimensions full pallet | L: 36" W: 36" H: 59" |
| Shipping weight full pallet | 714 lbs |
| Freight class | 85 |

Electrical data

| | |
|---------------------|-----------------|
| Motor | 2 HP |
| Volts / Frequency | 220 Vac / 60 Hz |
| Amps | 8.9 |
| Watts | 1500 |
| Phase | 1 PH |
| Type of plug (NEMA) | 5-15P |

Performance / Capacity

| | |
|------------------------------------|--------------|
| 1st grinding capacity (3/8" plate) | 30 lbs / min |
| 2nd grinding capacity (1/8" plate) | 16 lbs / min |
| | |
| | |
| | |
| | |

Accessories

| Knives | Plates |
|--------------------------------------|-------------|
| NIR-22 (Stainless Steel Rectangular) | CI-22-3/16" |
| NLV-22 (Long Lasting Steel) | CI-22-1/8" |
| | CI-22-3/8" |
| | CI-22-1/4" |
| | |

L: Length W: Width H: Height