



# BEVERAGE-AIR®

Project: \_\_\_\_\_  
Item: \_\_\_\_\_  
Location: \_\_\_\_\_  
Approved: \_\_\_\_\_

AIA#

SIS#

## P SERIES TOP MOUNT WARMING CABINET

PH1 Solid Half-Door Pass-Thru Warming Cabinet

MODEL:  
PH1-1HS-PT

PH1 P-SERIES WARMING CABINET

5 Year Parts/Labor Warranty Available

### CABINET CONSTRUCTION

- Exterior stainless steel front and side (galvanized top, back and bottom)
- Interior is made of corrosion resistant aluminum
- Stainless steel interior door liner
- Full electronic control
- 22 Gauge stainless steel door
- Heavy-duty cylinder locks
- Operational indicator panel contains thermometer and adjustable thermostat control which is accurately calibrated from 80°F to 180°F
- Manually controlled humidity vents are provided in the top of the cabinet
- Self-closing doors with 120° hold open feature, with cam-lift hinges
- Three (3) silver freeze shelves
- One-piece, snap-in magnetic door gasket
- Hinged front shroud
- Proximity door switch activates interior incandescent lighting
- 8' Cord and plug (see electrical data for details)



### OPTIONS & ACCESSORIES

- 3 Year parts/labor standard, additional 2 year warranty available
- Pan slides
- Stainless steel interior
- 3" or 6" Casters
- Left or right door hinge (at time of order)

### ELECTRICAL SYSTEM

- 15 AMP breaker required for single door units
- Strip type 750-watt heating elements, operating on 208-240/60/1, having a total of 1500 watts per compartment
- Externally mounted blower system maintains even temperature through out the food zone area



Please verify qualifying units by visiting:  
[www.energystar.gov/cfs](http://www.energystar.gov/cfs)

3779 Champion Blvd., Winston-Salem, NC 27105  
1-888-845-9800 Fax: 1-336-245-6453  
Beverage-Air.com Sales@bevair.com



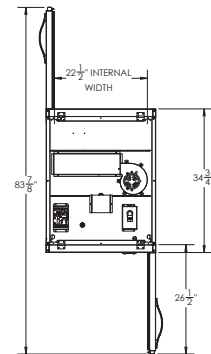
# BEVERAGE-AIR®

MODEL	PH1-1HS-PT
<b>EXTERNAL DIMENSIONAL DATA</b>	
Width Overall	26 1/2"
Depth Overall with Handle	38 1/4"
Height Overall	84 1/8"
Number of Doors	4
Depth with Door Open 90°	83 7/8"
Door Openings (in)	21 1/2" x 24 3/4"
<b>INTERNAL DIMENSIONAL DATA</b>	
NET Capacity (cubic ft.)	21.01
Internal Width Overall (in)	22 1/2"
Internal Depth Overall (in)	26"
Internal Height Overall (in)	56 5/8"
Number of Shelves	3
<b>ELECTRICAL DATA</b>	
Amps	5.9 / 6.8
Cabinet Voltage	208-240/60/1
Heater Watts per section (@240V)	1500
<b>SHIPPING DATA</b>	
Gross Weight - Crated	340 lbs
Height - Crated	92"
Width - Crated	30"
Depth - Crated	38"

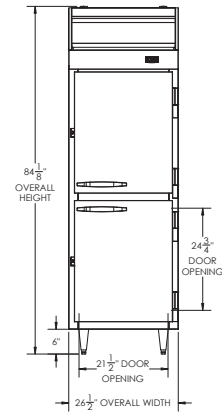
## Top Mount Warming Cabinet Pass-Thru Model: PH1-1HS-PT

### Model Views

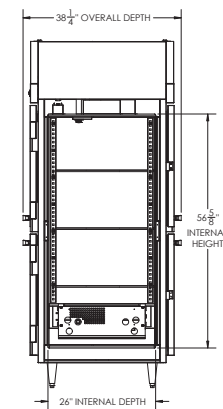
Required Clearance: Top 12"



### PLAN VIEW



### ELEVATION VIEW



### SIDE VIEW



### ELECTRICAL CONNECTION



208-240/60/1  
NEMA 6-20P

Unit pre-wired at factory  
and include 8' long cord  
and plug set.

3779 Champion Blvd., Winston-Salem, NC 27105 1-888-845-9800 Fax: 1-336-245-6453 Beverage-Air.com Sales@bevair.com

an Ali Group Company



The Spirit of Excellence